

Integration and Appliance of a Software-Tool Chain

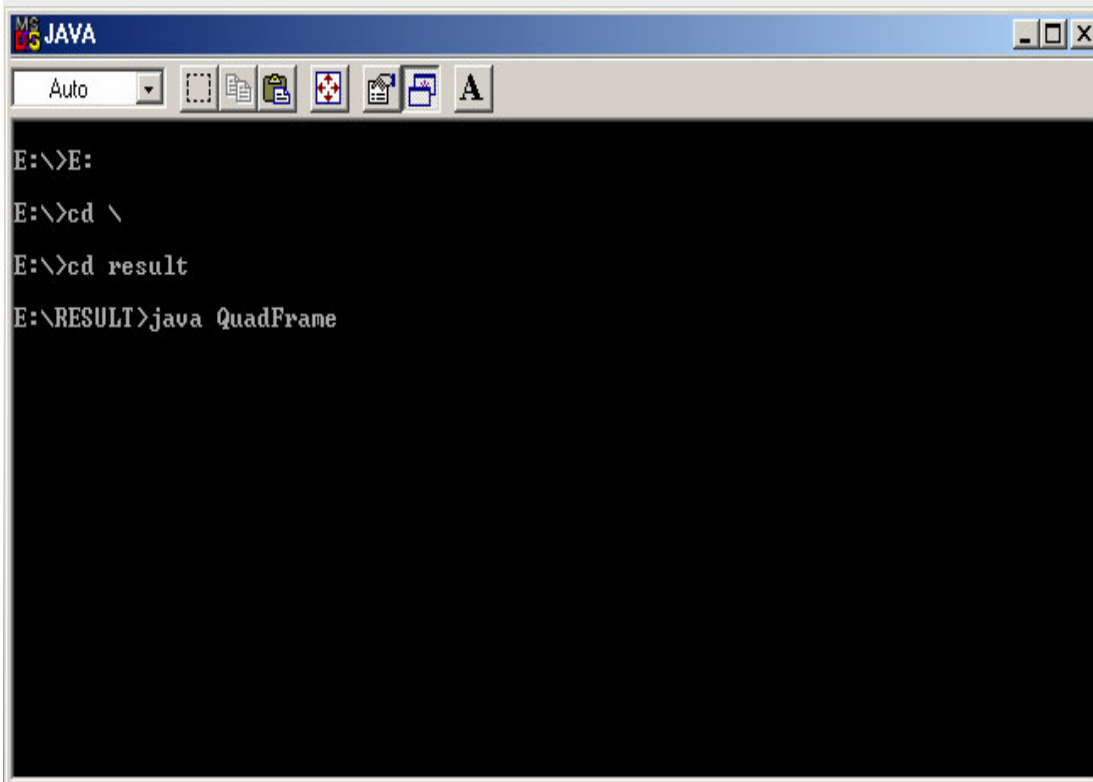
Java in Test Complete 2.0

Author :- Jamal Mohamed Kiyasudeen

Java in Test Complete 2.0

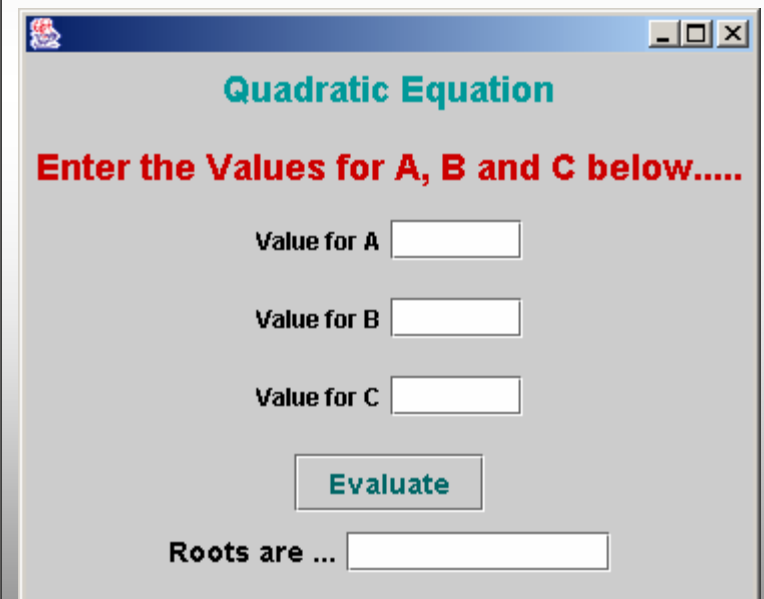
- Using Batch file (.Bat) Java class file can be launched in Test Complete 2.0.
- Clicking File/Tested Application will launch the Java Application in Test Complete.
- Scripts can be recorded in VB, JScript, C++ or in Delphi format.

Batch file is Executing...



A screenshot of a Windows command prompt window titled "MS-DOS Batch File". The window has a standard Windows XP-style title bar with minimize, maximize, and close buttons. Below the title bar is a menu bar with "Auto" and a dropdown arrow, followed by icons for file operations (new, open, save, print, etc.). The main area is a black terminal with white text showing the following commands and their execution:

```
E:\>E:
E:\>cd \
E:\>cd result
E:\RESULT>java QuadFrame
```



A screenshot of a Java application window titled "Quadratic Equation". The window has a standard Windows XP-style title bar. The background is light gray. The text "Quadratic Equation" is displayed in a large, bold, blue font. Below it, the text "Enter the Values for A, B and C below....." is displayed in a bold, red font. There are three input fields, each preceded by the text "Value for A", "Value for B", and "Value for C" respectively. Below these fields is a button labeled "Evaluate" in a blue font. At the bottom, the text "Roots are ..." is followed by a long input field.

View of Object Browser after Java Application is launched

TestComplete - Quadratic Test

File Edit Script Options Integration Panels Help

Script Editor Suites Test Log **Object Browser** Low-Level Recorder Stores Local Variables ActiveX Wizard

Objects

- Sys
 - WINWORD
 - JAVA
 - Window('tty', 'JAVA', 1)
 - Window('SunAwTToolkit', 'theAwTToolkitWindow', 1)
 - Window('OleDdeWndClass 0x#####', 'DDE Server Window', 1)
 - Window('QuadFrame', '', 1)
 - Window('CLIPBRDWNDCLASS 0x#####', '', 1)
 - WINOA386
 - TESTCOMPLETE
 - DDHELP
 - YMSGR_TRAY
 - WMENCAGT
 - WNMNGM1
 - BACKWEB-8876480
 - MSNMSGGR
 - WMIEXE
 - DAP
 - AVGCC32
 - LOGITRAY
 - LVCOMS
 - LOADQM
 - SYSTRAY
 - TASKMON
 - EXPLORER
 - STMGR
 - SPOOL32
 - MSTASK
 - AVGSERV9
 - STIMON
 - MPREXE
 - mmtask
 - MSGSRV32
 - KERNEL32

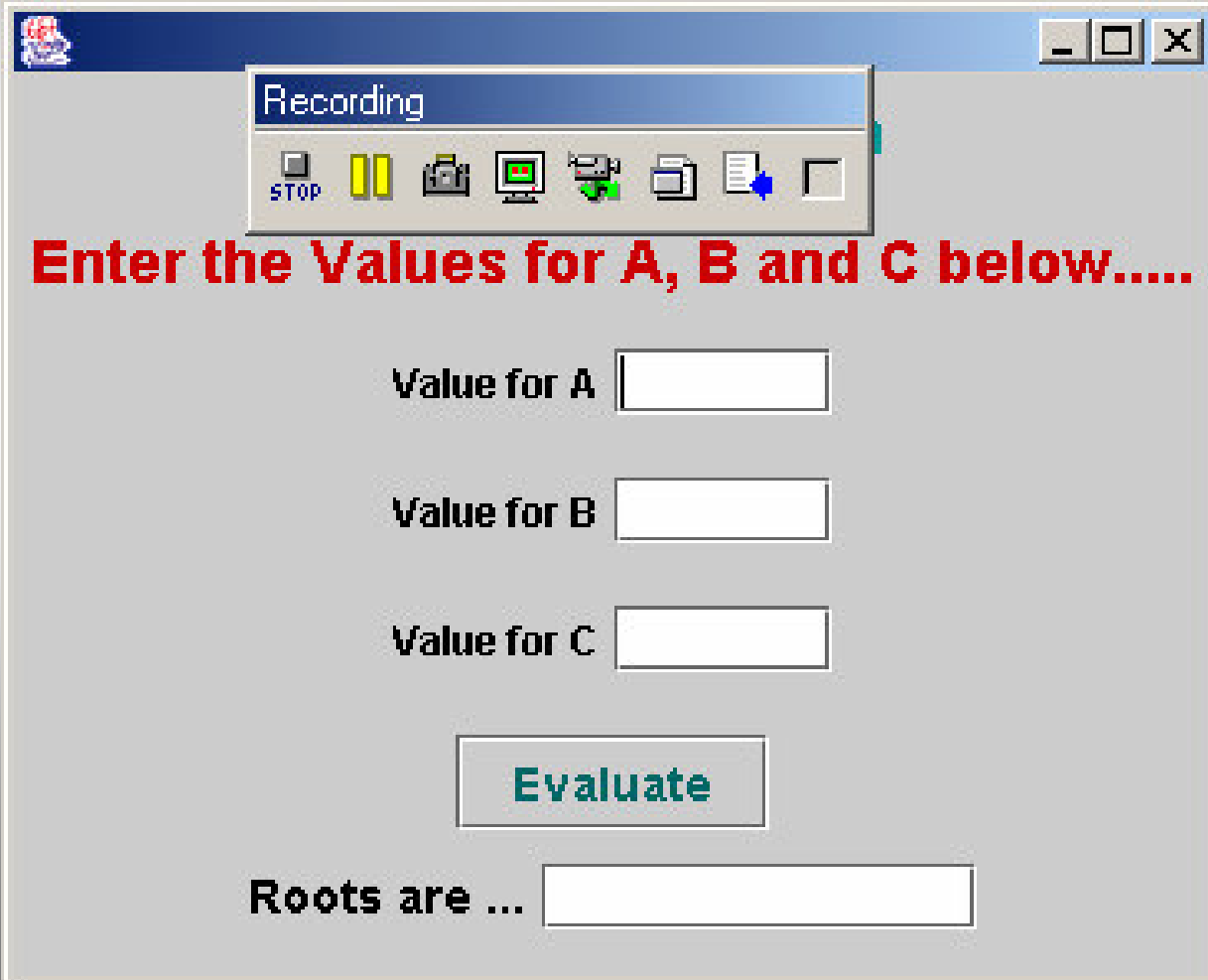
Sys.ChildCount

Properties Fields Methods Actions Events

Property name	Property value
ChildCount	28
ChildList	Process('WINWORD') Process('JAVA') Process('WINOA386') Process('TESTCOMPLETE') Process('DDHELP') Process('YMSGR_TRAY') Process('WMENCAGT') Process('WNMNGM1') Process('BACKWEB-8876480') Process('MSNMSGGR') Process('WMIEXE') Process('DAP') Process('AVGCC32') Process('LOGITRAY') Process('LVCOMS') Process('LOADQM') Process('SYSTRAY') Process('TASKMON') Process('EXPLORER') Process('STMGR') Process('SPOOL32') Process('MSTASK') Process('AVGSERV9') Process('STIMON') Process('MPREXE') Process('mmtask') Process('MSGSRV32') ...
Clipboard	
Exists	True
FullName	Sys
ID	-1
MouseX	836
MouseY	756
Name	Sys
OleObject	params

Description
ChildCount : Integer;
Number of child objects.

Script Recording is ON



The image shows a screenshot of a software window titled "Recording". The window has a blue title bar with standard Windows window controls (minimize, maximize, close). Below the title bar is a toolbar containing several icons: a "STOP" button, a yellow vertical bar, a printer icon, a computer monitor icon, a green checkmark icon, a document icon, a blue arrow icon, and a small square icon. The main area of the window is light gray and contains the following text and input fields:

Enter the Values for A, B and C below.....

Value for A

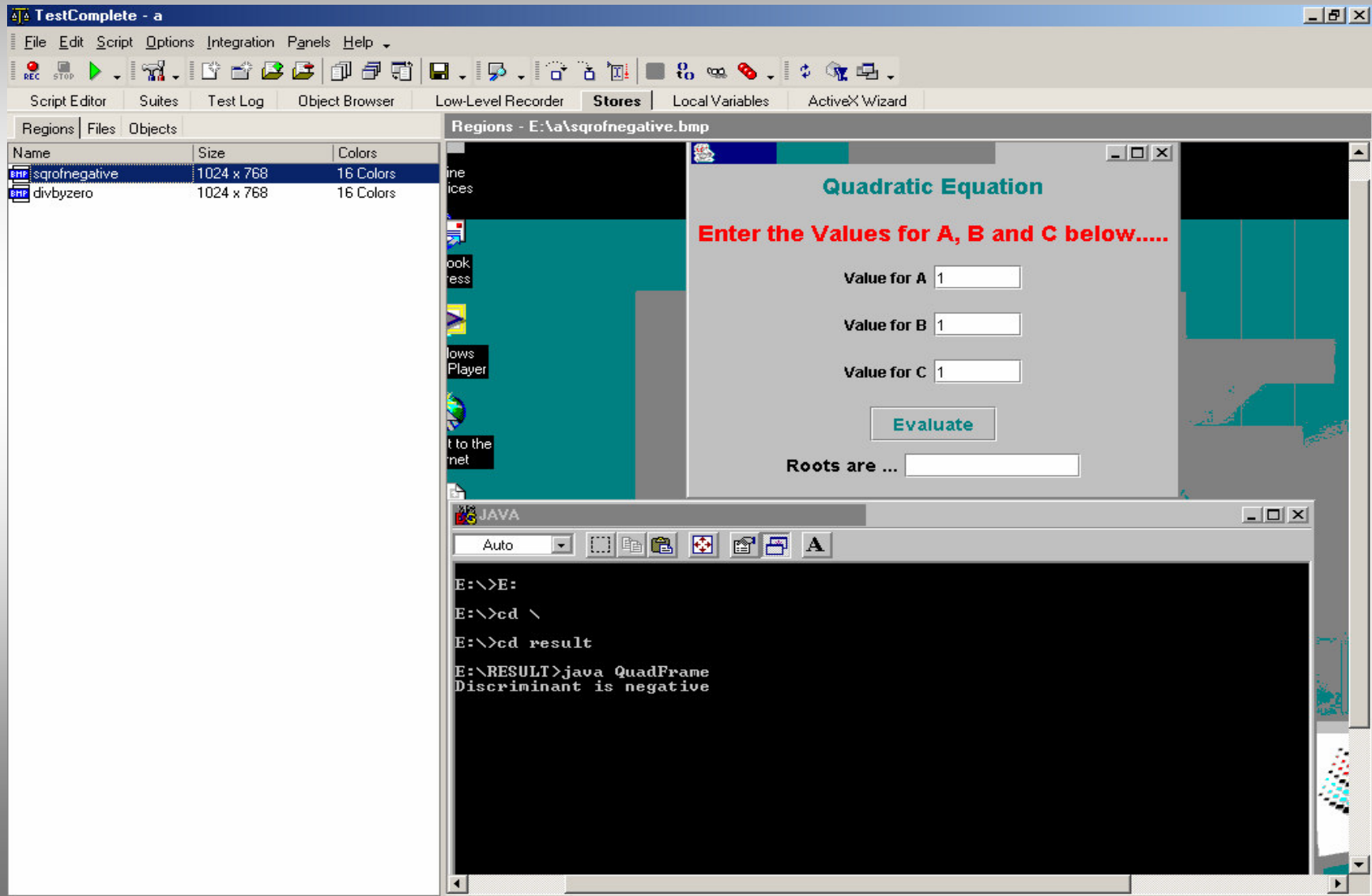
Value for B

Value for C

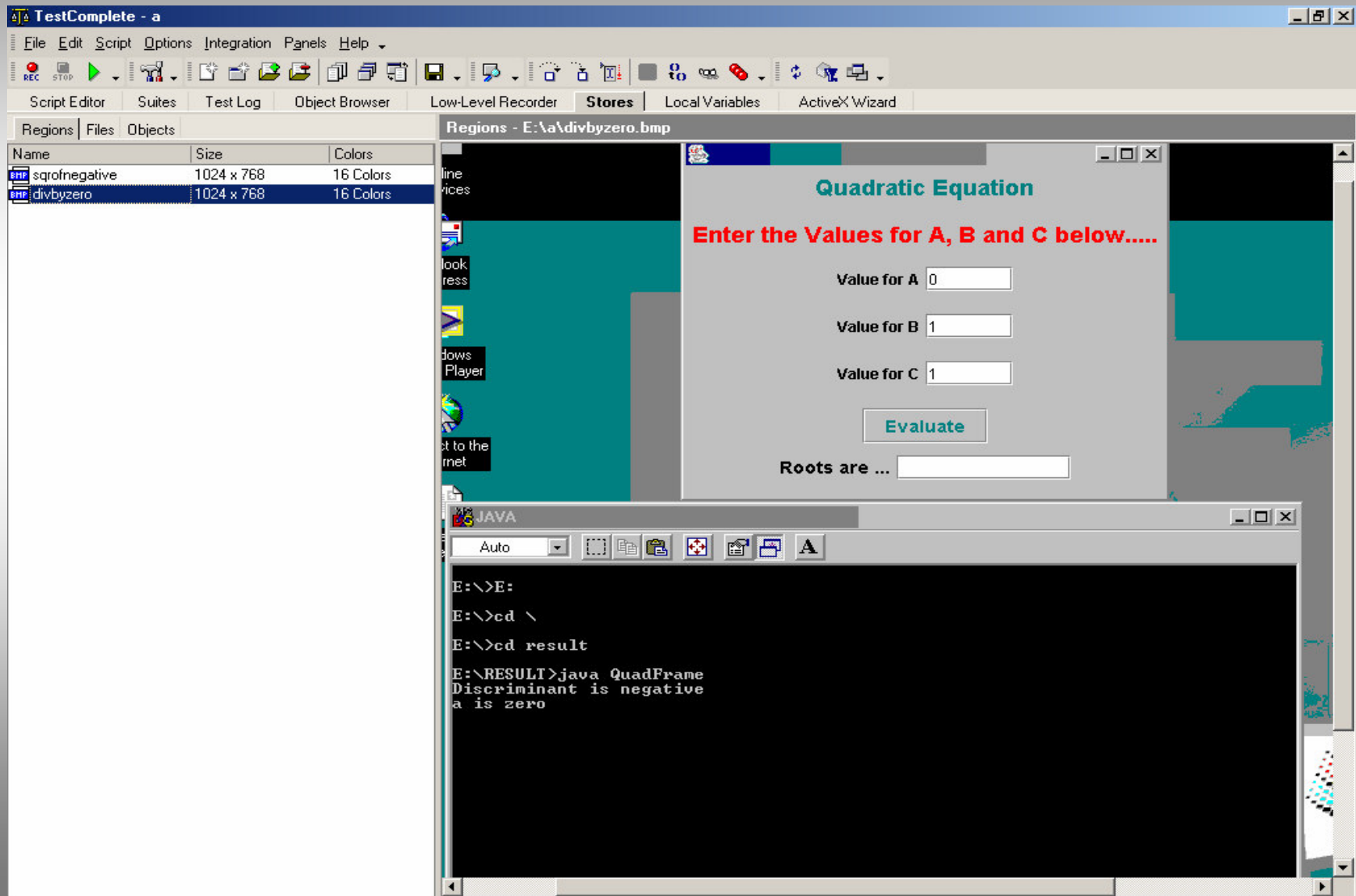
Evaluate

Roots are ...

Screen Shots can be Captured while Recording



Screen Shots (cont...)



View of Test Log after Recording is finished

TestComplete - Quadratic Test

File Edit Script Options Integration Panels Help

REC STOP [Icons]

Script Editor Suites **Test Log** Object Browser Low-Level Recorder Stores Local Variables ActiveX Wizard

N	Name	Start Time	End Time	Run Time	Description
1	Main	12:33:47 AM	12:33:55 AM	0:00:08	
2	Main	12:34:00 AM	12:34:00 AM	0:00:00	
3	Main	12:34:10 AM	12:34:11 AM	0:00:01	

Message	Time	Description
---------	------	-------------

✓ ✗ :0 ✓ ⚠ :0 ✓ ⓘ :0 ✓ ⚡ :0 ✓ IMG :0 ⌚